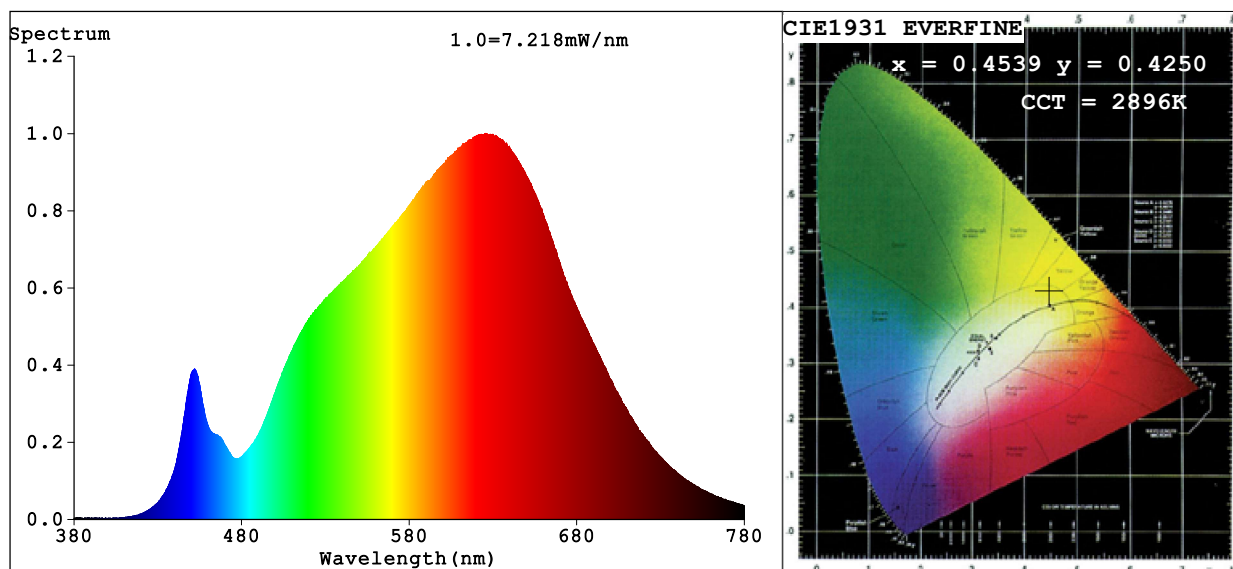


Spectrum Test Report



Color Parameters:

Chromaticity Coordinate: $x=0.4539$ $y=0.4250$ $u'=0.2524$ $v'=0.5318$

CCT=2896K (Duv=0.0059) Dominant WL:Ld =581.5nm Purity=63.9%

Ratio:R=24.2% G=73.7% B=2.2%; Peak WL:Lp=625.7nm FWHM=167.9nm

Render Index:Ra=90.2 CRI=86.1 TM30:Rf=91 Rg=96

R1 =89 R2 =92 R3 =94 R4 =91 R5 =88 R6 =90 R7 =95

R8 =82 R9 =55 R10=81 R11=91 R12=71 R13=90 R14=96 R15=85

Photo Parameters:

Flux = 364.1 lm Eff. : 82.24 lm/W Fe = 1.242 W Scotopic:471.76 S/P:1.2957

Electrical parameters:

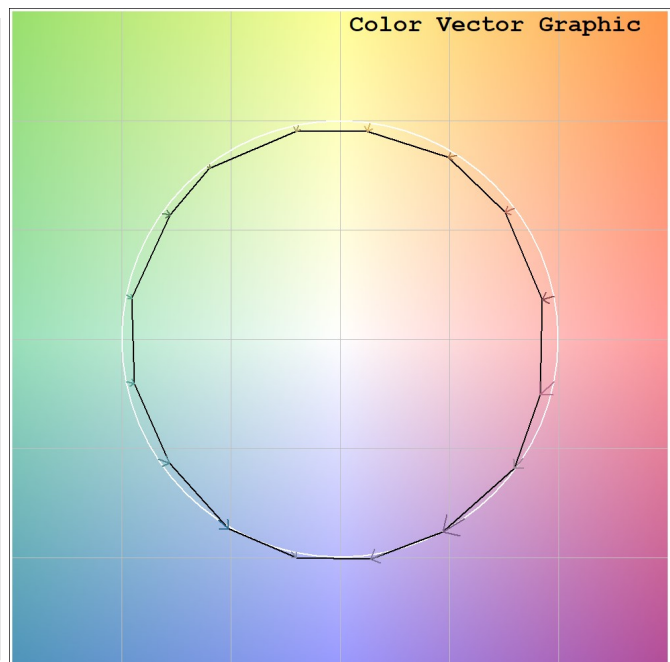
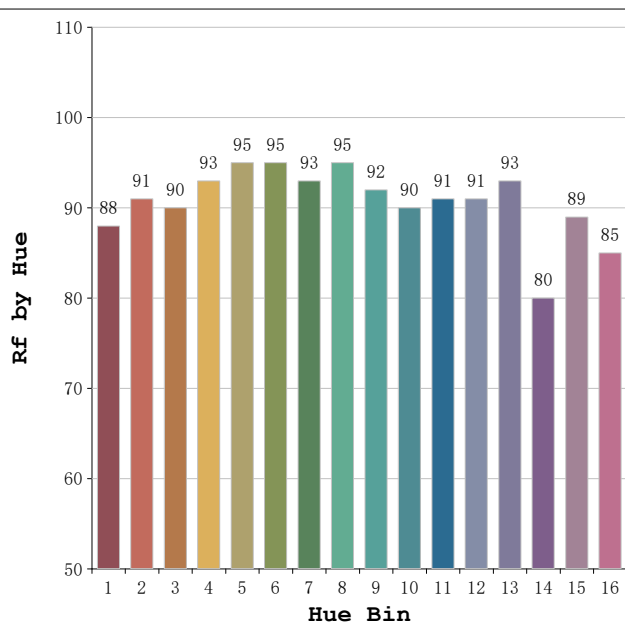
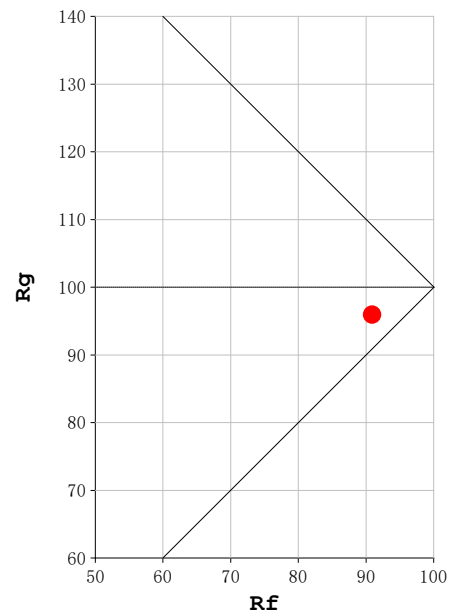
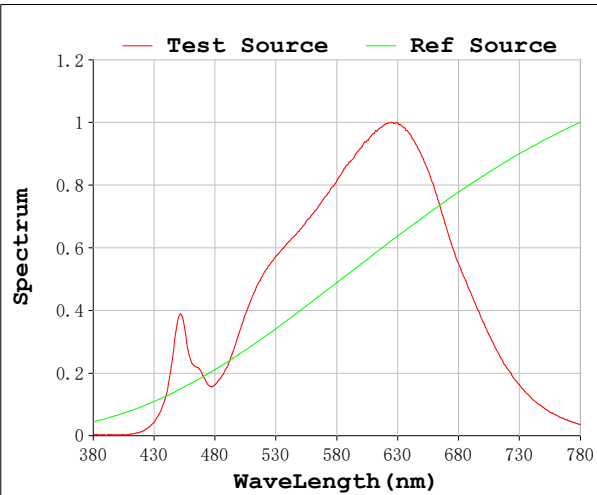
V = 11.998 V I = 0.3690 A P = 4.427 W PF = 1.000

Status: Integral T = 3774 ms Ip = 52409 (80%)

Model:Ecoled Ibiza pro 2800K
Tester:Sergio Carneros
Temperature:20Deg
Manufacturer:Luz Negra

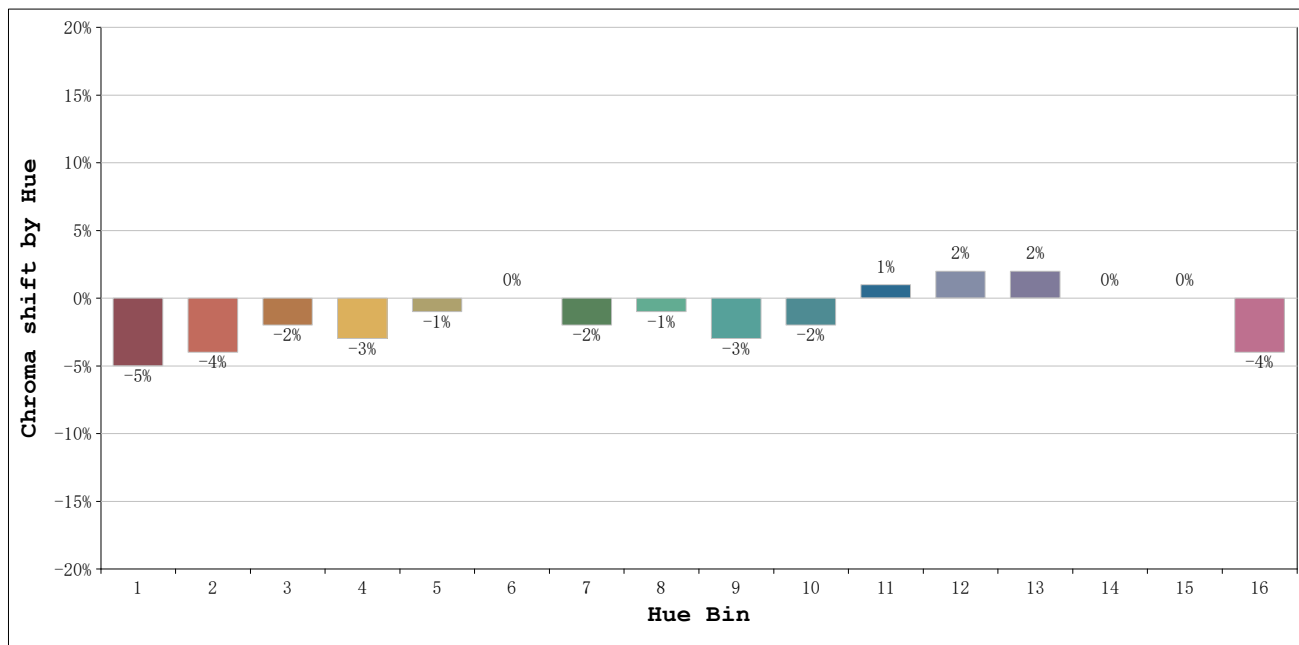
Number: 30.096
Date:2022-02-02 08:23:15
Humidity:50%
Remarks:100cm de tira flexible

Rf: 91 **CCT: 2896 K** **u': 0.2524**
Rg: 96 **Duv: 0.0059** **v': 0.5318**



Model:Ecoled Ibiza pro 2800K
 Tester:Sergio Carneros
 Temperature:20Deg
 Manufacturer:Luz Negra

Number: 30.096
 Date:2022-02-02 08:23:15
 Humidity:50%
 Remarks:100cm de tira flexible



Hue Bin	Hue Angle	Rf	Graphic shift(%)	
			Chroma	Hue
1	0.0° - 22.5°	88	-5	0
2	22.5° - 45.0°	91	-4	1
3	45.0° - 67.5°	90	-2	3
4	67.5° - 90.0°	93	-3	0
5	90.0° - 112.5°	95	-1	2
6	112.5° - 135.0°	95	0	1
7	135.0° - 157.5°	93	-2	-1
8	157.5° - 180.0°	95	-1	1
9	180.0° - 202.5°	92	-3	2
10	202.5° - 225.0°	90	-2	4
11	225.0° - 247.5°	91	1	6
12	247.5° - 270.0°	91	2	3
13	270.0° - 292.5°	93	2	-5
14	292.5° - 315.0°	80	0	-11
15	315.0° - 337.5°	89	0	-5
16	337.5° - 360.0°	85	-4	-6

Model:Ecoled Ibiza pro 2800K
 Tester:Sergio Carneros
 Temperature:20Deg
 Manufacturer:Luz Negra

Number: 30.096
 Date:2022-02-02 08:23:15
 Humidity:50%
 Remarks:100cm de tira flexible